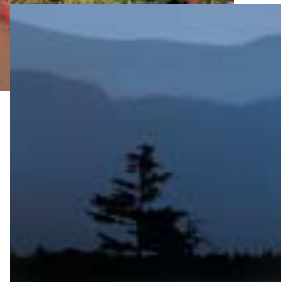


board & batten

PREMIUM VERTICAL PANEL



**RUSTIC
BEAUTY &
CRAFTSMANSHIP**



beauty & performance *across the* board

Alcoa's Board & Batten premium vertical siding is designed to be striking enough to provide beauty to the details that matter, yet versatile enough to be a flexible design solution for the entire home.

Board & Batten is engineered to a nominal 0.050" thickness to provide superior performance across the board...in impact resistance, in rigidity, in durability, and in the ease and speed it installs.

IT'S BETTER BECAUSE IT'S ALCOA

Alcoa Home Exteriors has earned its steadfast reputation by constantly improving and evolving products and standards – exactly, what you'd expect from a division of Alcoa, Inc., the world's leader in aluminum production and fabrication and one of America's "Most Admired Companies" as rated by *Fortune Magazine*.



Features 6-1/4" board with 1-3/4" batten



board & batten

PREMIUM VERTICAL PANEL



WELCOME A BOARD

With its crisp vertical lines, classic shadow pattern, and authentic craftsman-like construction, Alcoa's Board & Batten premium vertical panels provide a warm welcome on any distinctive home exterior.

A PERFECT COMPARISON, SIDE BY SIDE

From every angle, Board & Batten premium vertical panels give the impression of authentic board & batten styling, down to their natural cedar graining. With wider dimensions and more authentic colors than other panels, Alcoa's Board & Batten provides the perfect solution to historic renovations; and an ideal design touch to add architectural dimension to a porch, alcove or other point of interest.

