

Installation Instructions For New Construction Single Hung, Double Hung And Picture Windows.

(The manufacturer's warranty is voided if these instructions are not followed.)

Window Opening

The rough opening must be plumb, level and square and 1/2 inch larger than window size in width and height, not including the nailing fins (See fig. 1). Close and lock the sash to aid in keeping the window square during installation.

Apply a 3/8-inch continuous bead of silicone caulking to the interior surface of the nailing fin covering the holes in the fin, to seal the window's fin to the sheathing or house wrap. If the rough opening is larger than the window unit by more than 1/2 inch, also apply the caulk to the sheathing or house wrap making sure the bead is no more than 1/4 inch from the edge of the rough opening, so that it is covered by the nailing fin when the window is installed.

Setting Shims

The sill of the window must be supported in a straight and level position at a minimum of three points, at either end and in the middle. Windows wider than 30 inches should be supported at a maximum of every 12 inches. (See fig. 2)

Placing Shims

Place 1/4 inch shims on the sill plate of the window opening spaced as described above. Multiple twin or triple windows should have a shim under each mullion. (See fig. 2)

Setting Window

Set window on the shims and adjust side clearance to be equal on both sides. Tack one upper corner of the fin to keep window in place. Check sill with a level and adjust thickness of shims as required to level sill. Re-adjust side clearance if necessary. Shims must be cut to exact thickness to fit snug and not fall out but do not force shims into place, pushing the sill upward out of level. Shim both sides of window (see fig. 2) and adjust thickness of shims to make diagonal measurements equal with the window plumb and square.

If the above has been done correctly the width across the top, middle and bottom will measure the same. The wool pile clearance between the sash stile and jamb mainframe will be equal. The meeting rail and lock rail will align evenly at the top of the bottom sash with parallel sight lines. The sweep latches should lock smoothly.

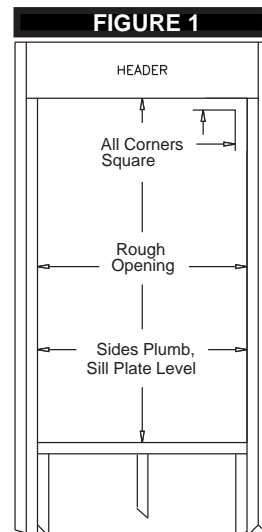


FIG. 2, EXTERIOR VIEW

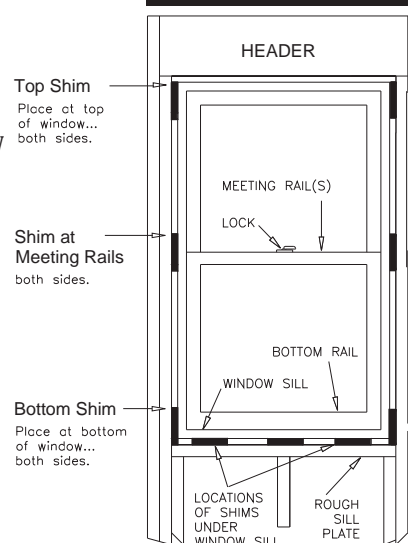
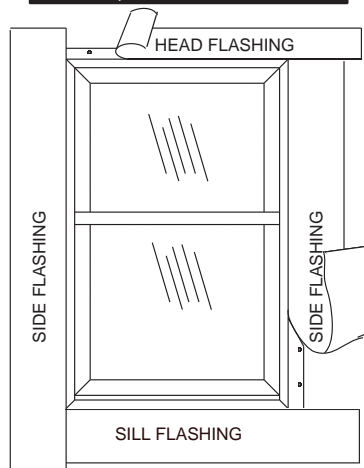


FIG.3, EXTERIOR VIEW



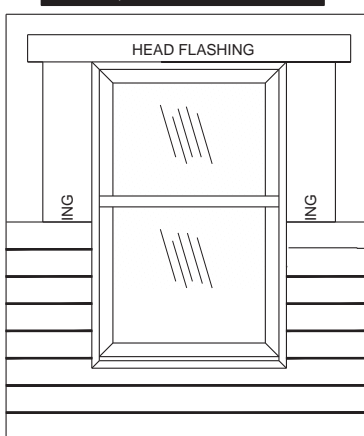
Nailing Windows Fins

Use stainless or galvanized steel roofing nails, long enough to penetrate studs a minimum of 1 inch.

Nail the entire perimeter of the nailing fin to the sheathing using every other slotted hole at minimum. Multiple windows twins & triples must be nailed directly under and 6" either side of each mullion. Make sure jambs are not bowed out.

Nail the fin snug but do not "sink" the nails similar to installing siding. Nailing should be just tight enough to hold window but not stop the movement of the "Frame-Work" underneath during expansion and contraction. Make sure the head and sill are **NOT** crowned up or down, or the jambs bowed in or out.

FIG.4, EXTERIOR VIEW



Flashing

Use self adhesive flexible flashing a minimum of 4" wide which has a self-adhering surface on one side, approved for use on vinyl, wood & other substances such as house wrap. This flashing material must meet a minimum water resistance of 24 hours in accordance with ASTM-D779.

(See fig. 3) Sill flashing is applied first up against the bottom of the window sill and over the fin extending beyond the sides of the window jamb fin and side flashing at least 2 inches. Apply jamb flashing next over the jamb-nailing fin, continuing over and beyond the sill flashing, 2 inches below. Apply head flashing similarly extending 2" past either side of the jamb flashing, to complete the window flashing detail.

(See Fig. 2) Install batt insulation between the window and rough opening. It is very important that these openings are not over stuffed and warp the frame. Do not **NOT** use expanding foam. Doing so will void warranties.

Cautions

- Remove or cut ventilation holes in plastic shipping wrap if windows are not installed immediately.
- Do not lay windows flat or store in the sun. The heat will shrink the plastic wrapping and warp the frame.
- Do not caulk or plug weep holes.
- Do not drill into or through the sill of the window.
- Protect the window during construction and plastering.
- Do not lift window by top of frame, only by jambs.
- Protect vinyl sill from traffic and damage.

Please call our hot line
1-(800) 234-4228
for any installation help
that you might need.